

Name: \_\_\_\_\_

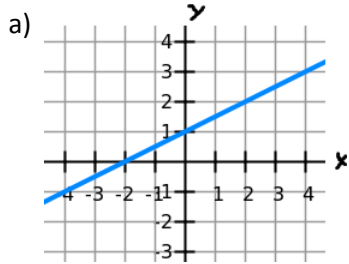
Period: \_\_\_\_\_

### Checkpoint 5D

*Integrated Math 2*

Answer the questions thoroughly including any necessary math or explanations.

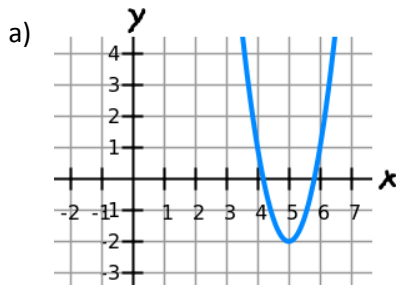
1) Describe the transformation from the parent function  $f(x) = x$ .



b)  $g(x) = 4x - 2$

c)  $h(x) = -2(x - 4)$

2) Describe the transformation from the parent function  $f(x) = x^2$ . What is the vertex of the transformation?



b)  $g(x) = (x + 3)^2 - 4$

c)  $h(x) = (x - 2)^2 + 9$

3) Write the equation that represents the transformation from the parent function  $f(x) = x^2$ . What is the vertex of the transformation?

- a) Shift 2 units right, shift 5 units down    b) Shift 3 units left, shift 4 units up    c) Shift 6 units down, shift 7 units left

5) Describe the transformation from the parent function  $f(x) = 2^x$ .

a)  $m(x) = 2^{(x-5)} + 3$

b)  $n(x) = 2^{(x+2)} - 7$

c)  $t(x) = 2^{(x-9)} - 4$

6) Describe the transformation from Function 1 to Function 2.

a)  $f_1(x) = (x+4)^2 - 5$  ;  $f_2(x) = \frac{1}{2}(x-1)^2 - 3$

b)  $f_1(x) = 2^{(x-1)} + 1$ ;  $f_2(x) = 2^{(x-4)} - 3$